

DRAWING NUMBER
26-128

DRAWING NUMBER

DRAWING NUMBER

DRAWING NUMBER

PLAT NO. 1 OF

WYNNEWOOD ACRES

A SUBDIVISION IN THE W 1/2 OF THE SW 1/4
OF THE SW 1/4 OF SECTION 26, T43S, R42E

accreage PALM BEACH COUNTY, FLORIDA

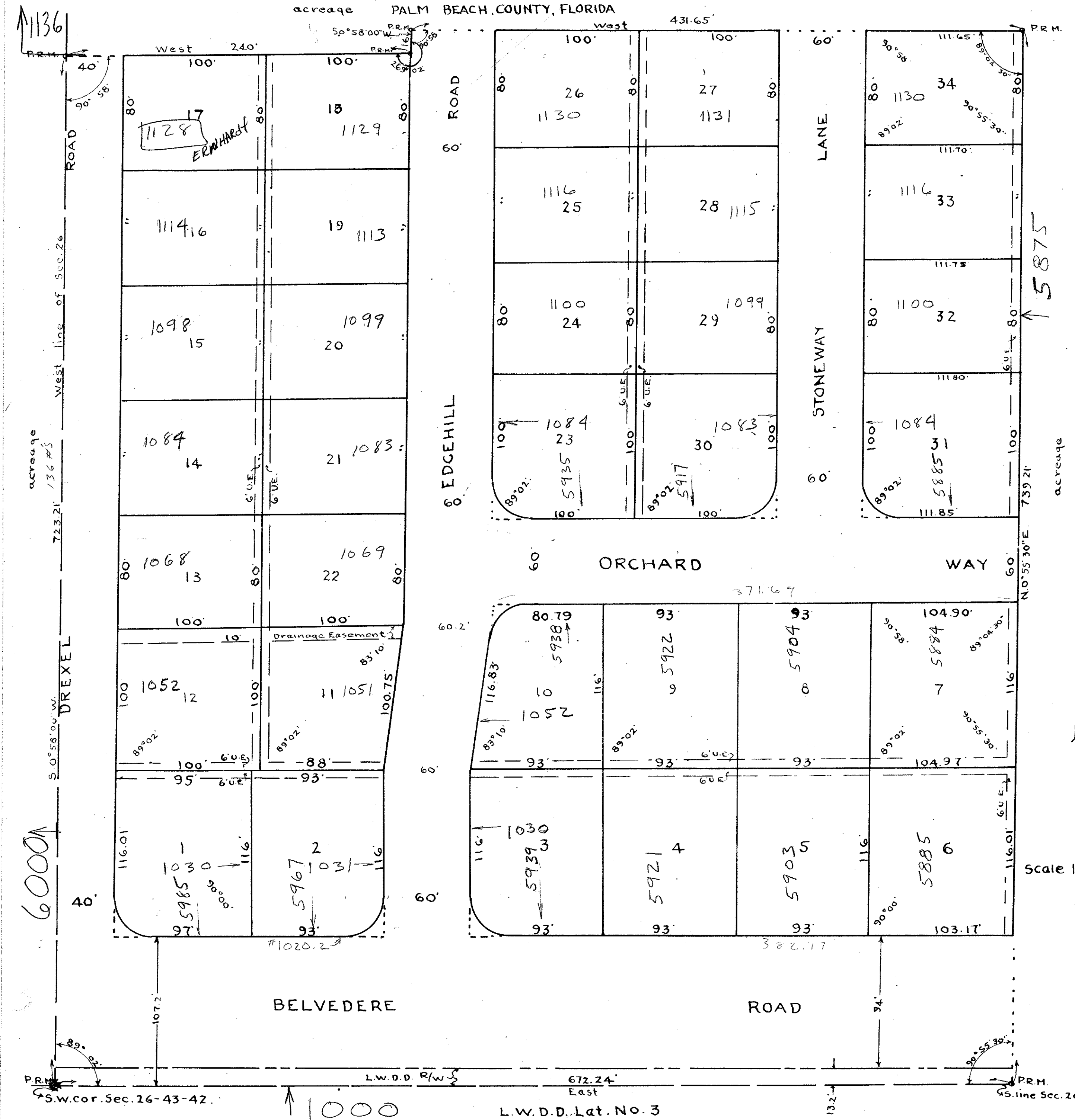
(See P.B. # 2 (26-180)
for no. breakdown)

This PLAT refiled to correct Dedication.

128
129

STATE OF FLORIDA
COUNTY OF PALM BEACH }
This Plat was recorded at 2:55 PM
on the 21 day of January
1960 and duly recorded in Plat Book No
26 on page 129
J. ALAN ARNETTE, Clerk Circuit Court
for M. Blackburn D.C.

STATE OF FLORIDA
COUNTY OF PALM BEACH }
This Plat was filed for record at 9:07 AM
this 19th day of January
1960 and duly recorded in Plat Book No
26 on page 128
J. ALAN ARNETTE, Clerk Circuit Court
for M. Blackburn D.C.



STATE OF FLORIDA }
COUNTY OF PALM BEACH }
DEDICATION
Know all men by these presents, that A and J. DEVELOPER, Inc. of West Palm Beach, Florida, its owners in fee simple of a tract of land shown on this plat as WYNNEWOOD ACRES PLAT No. 1 located in Palm Beach County, Florida and described as follows: The S. 739.21' of the W 1/2 of the SW 1/4 of Section 26, T43S, R42E, less the N. 16' of the W. 240' thereof, and by and with the authority of the Board of Directors has caused the same to be surveyed and platted as shown hereon and hereby dedicated to the perpetual use of the public as public highways all Roads, Lanes and Ways as shown hereon and the owner also dedicates to the perpetual use of the public the easements shown hereon for the purposes as stated on this plat.

In witness whereof, the said corporation has caused these presents to be signed by its President and attested by its Secretary and its corporate seal to be affixed hereto, by and with the authority of its Board of Directors, this 7th day of December, 1959.

By: Joel Courtman, Inc. President
Attest: Allen E. Smolen, Secretary
By: Joel Courtman, Inc. President
Attest: Allen E. Smolen, Secretary

ACKNOWLEDGEMENT

There shall not be any buildings on utility easements.
There shall not be any buildings or any kind of construction or planting of trees or shrubs on drainage easements.
Easements are for public utilities unless otherwise shown.
Building set-back lines shall be as required by the Palm Beach County Zoning Commission.
Intersection block corner arcs, where shown, have a 25' radius, and dimensions are to P.I.

STATE OF FLORIDA }
COUNTY OF PALM BEACH }
I hereby certify that on this day personally appeared before me, an officer duly authorized to administer oaths and take acknowledgements, Joel Courtman and Allen E. Smolen, personally known and known to be President and Secretary respectively of A and J. DEVELOPER, Inc. and they acknowledged before me that they executed the foregoing instrument in their official capacity as the act and of said company and by and with the authority of the company.
Witness my hand and official seal at West Palm Beach, Florida, this 7th day of December, 1959.

June W. Swain
Notary Public

Subscribed and sworn to before me this 7th day of December, 1959.
My commission expires Oct 6th 1962

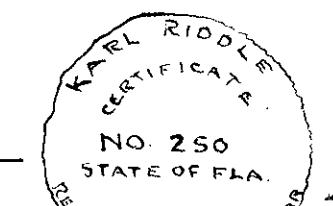
STATE OF FLORIDA }
COUNTY OF PALM BEACH }
I hereby certify that the plat shown hereon is a true and correct representation of a survey made by me and is accurate to the best of my knowledge and belief, and that permanent reference monuments (P.R.M.) have been set as required by law.

Karl Riddle
Registered Land Surveyor
Florida certificate No. 250.

1000-305

Approved: JANUARY 18 A.D. 1960.
Board of County Commissioners
By: Stephen Marshall
County Engineer

By: Kenneth G. ...
Vice-Chairman



Final date of survey 12-1-59.
Subscribed and sworn to before me this 21st day of January, 1960.
My commission expires Oct 14th 1962

June W. Swain
Notary Public

Subscribed and sworn to before me this 21st day of January, 1960.
My commission expires: Sept. 22, 1961.

128
26/43/42
26
100